

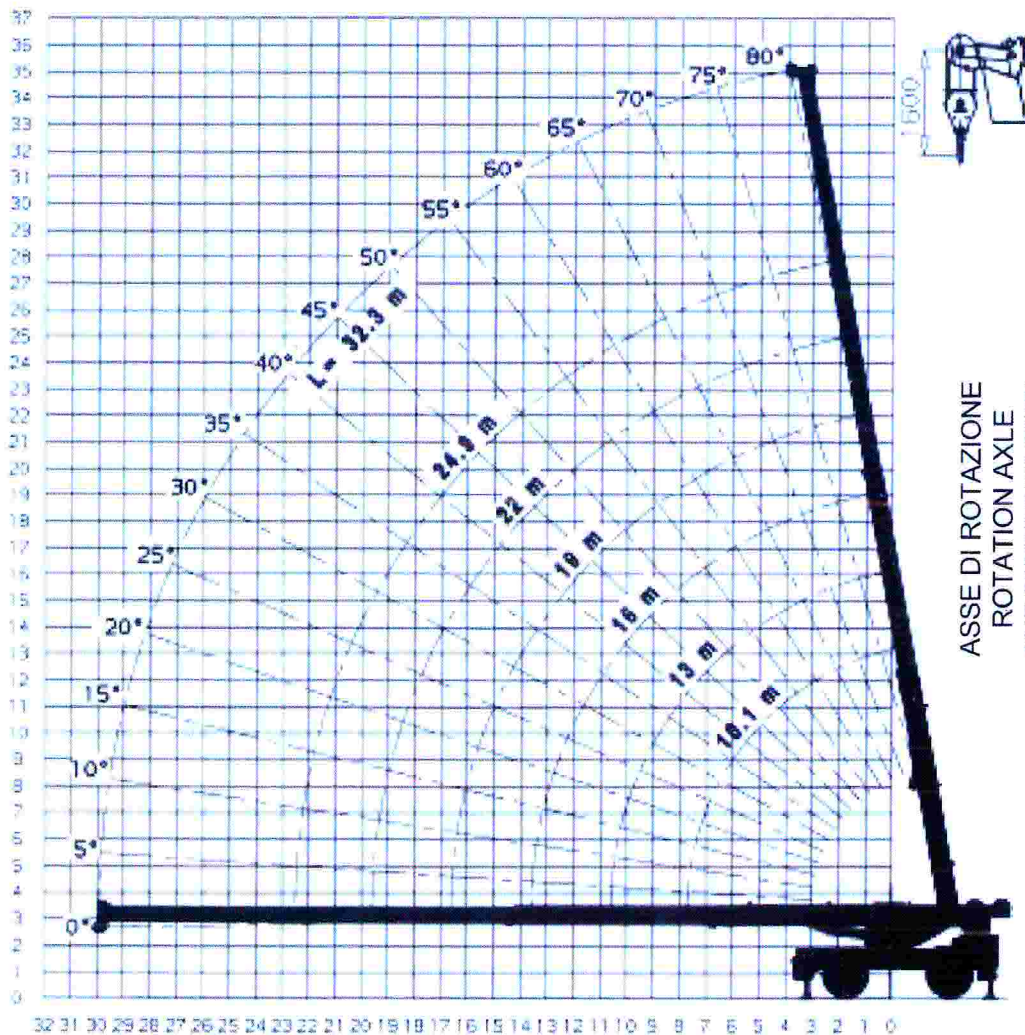
LOCATELLI **LT**
AUTOGRU



GRIL 8600

DIAGRAMMA DI LAVORO – 360°
WORKING DIAGRAM – 360°
DIAGRAMME DE TRAVAIL – 360°
ARBEITSBEREICH – 360°
DIAGRAMA DE ALCANCES – 360°

ALTURAS DE LEVANTAMIENTO
 HUBHOHEN
 HAUTEURS DE LEVAGE
 LIFTING HEIGHTS
 ALTEZZA DI SOLLEVAMENTO



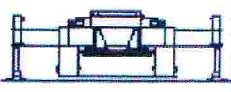


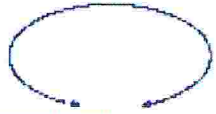
ASSE DI ROTAZIONE
 ROTATION AXLE
 AXE D'ORIENTATION
 DREHACHSE
 EJE DE GIRO

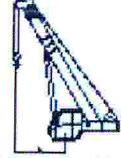

RAGGIO DAL CENTRO DI ROTAZIONE
 RADIUS FROM CENTER OF ROTATION
 PORTEE DE L'AXE D'ORIENTATION
 RADIUS AB DREHACHSE
 RADIO DESDE EL CENTRE DE GIRO



GRIL 8600





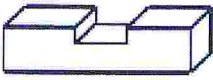
| | | | | |
|---|---|---|--|--|
|  |  |  |  | |
| 7,0 m x 6,9 m | 10,1 m – 32,3 m | 8000 kg | 360° | |


|  | PORTATE SU STABILIZZATORI IN kg – 360° | | | | | | | |
|---|--|-------|-------|-------|-------|--------|----------------|---|
| | LUNGHEZZA BRACCIO PRINCIPALE | | | | | | QUARTA SEZIONE | |
| | 10,1 m | 13 m | 16 m | 19 m | 22 m | 24,9 m | 32,3 m |  |
| 3 m | 60000 | | | | | | | |
| 4 m | 43000 | 38300 | 33200 | 27400 | | | | |
| 5 m | 33800 | 32400 | 28400 | 25000 | 22900 | 19800 | | |
| 6 m | 28100 | 27900 | 26200 | 21400 | 20000 | 18000 | 12700 | 80° |
| 7 m | 23400 | 23400 | 21900 | 20000 | 18200 | 16400 | 11700 | 77° |
| 8 m | | 20000 | 19100 | 17700 | 16300 | 14700 | 10900 | 75° |
| 9 m | | 17400 | 17000 | 16200 | 14800 | 13400 | 10500 | 73° |
| 10 m | | 15300 | 15300 | 13400 | 13300 | 12000 | 9500 | 71° |
| 11 m | | | 13600 | 11200 | 11200 | 10900 | 8800 | 70° |
| 12 m | | | 11900 | 10100 | 9600 | 9600 | 8200 | 68° |
| 13 m | | | 10300 | 9300 | 8400 | 8300 | 7500 | 66° |
| 14 m | | | | 8600 | 7700 | 7200 | 7100 | 64° |
| 15 m | | | | 8000 | 7100 | 6700 | 6400 | 62° |
| 17 m | | | | | 6100 | 5800 | 5600 | 58° |
| 19 m | | | | | 5200 | 5100 | 4400 | 54° |
| 21 m | | | | | | 4300 | 3800 | 48° |
| 23 m | | | | | | | 3200 | 44° |
| 25 m | | | | | | | 2900 | 37° |
| 27 m | | | | | | | 2600 | 28° |
| 29 m | | | | | | | 2300 | 20° |



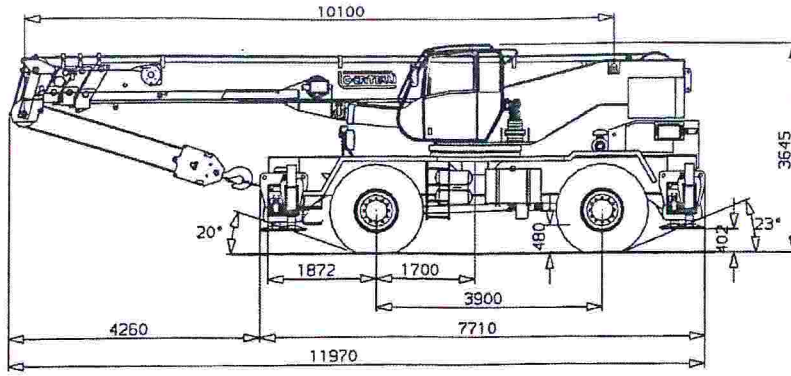
GRIL 8600



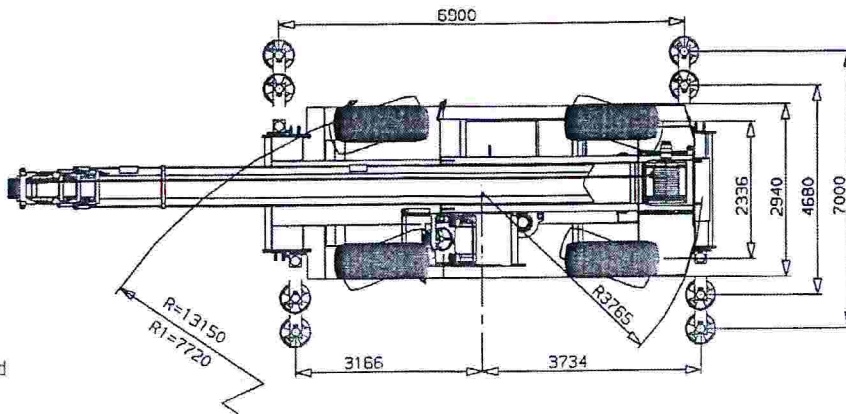
| | | | | |
|---|---|---|--|--|
|  |  |  | | |
| 7 bar 23.50 R25 | 10,1 m – 16 m | 8000 kg | | |

|  | PORTATE SU PNEUMATICI IN kg | | | |
|---|-----------------------------|---------------------------|---------|-----------------------|
| | LUNGHEZZA BRACCIO | STATICHE SETTORE FRONTALE | SU 360° | IN TRASLAZIONE 3 km/h |
| 4 m | 10,1 m | 19500 | 11700 | 14700 |
| 4,5 m | 10,1 m | 17700 | 9700 | 13400 |
| 5 m | 10,1 m | 16300 | 8300 | 12100 |
| 6 m | 10,1 m | 13600 | 6400 | 10100 |
| 7 m | 10,1 m | 10500 | 4800 | 8700 |
| 8 m | 13 m | 8100 | 3700 | 7400 |
| 9 m | 13 m | 6600 | 2900 | 6400 |
| 10 m | 13 m | 5500 | 2200 | 5500 |
| 11 m | 16 m | 4500 | 1700 | 4500 |
| 12 m | 16 m | 3700 | 1300 | 3700 |

ATTENZIONE
È VIETATO SOLLEVARE IL BRACCIO TELESCOPICO
OLTRE I 55° SE LA GRU NON È POSIZIONATA
SUGLI STABILIZZATORI



Dimensioni (mm)



R1:
4 ruote sterzate
4 wheels steered

Dimensions (mm)

GRIL 8600

DATI TECNICI - SPECIFICATIONS - CARACTERISTIQUES - TECHNISCHE DATEN - DATOS TECNICOS



| Peso sugli assali Axle loads Poids d'essieux Achslasten Carga por eje | 1 | 2 | Peso totale Total weight Poids total Gesamgewicht Peso total |
|---|------|------|--|
| t | 19,4 | 21,8 | 41,2 |